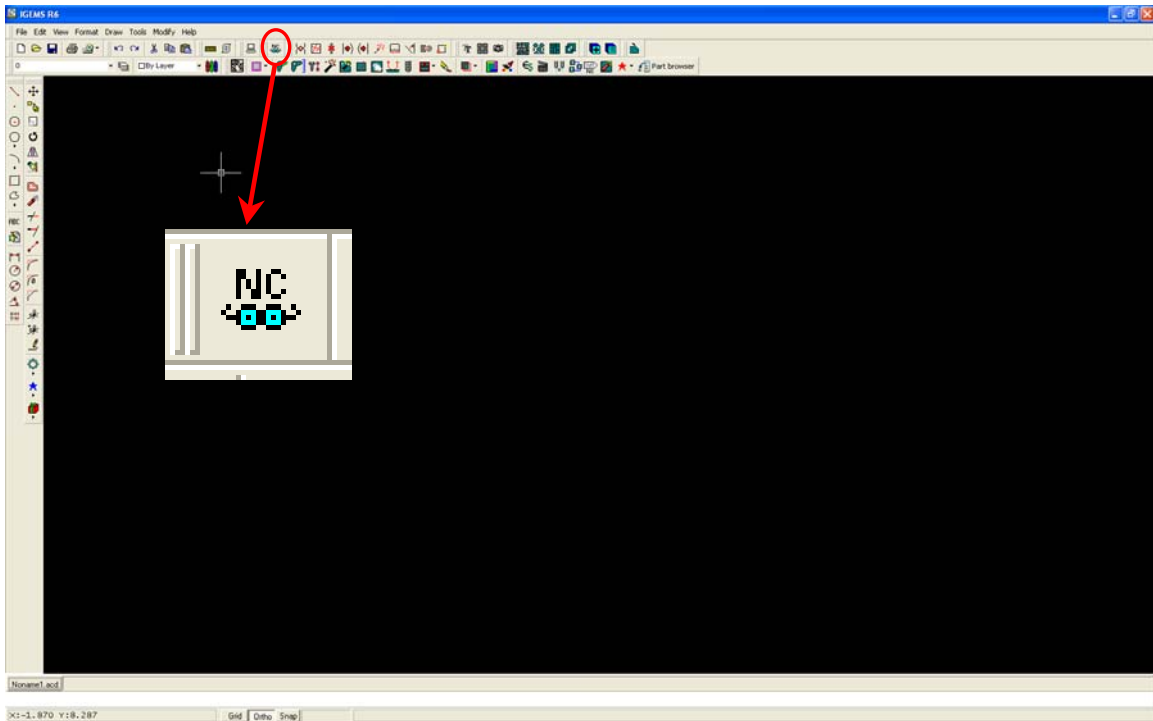
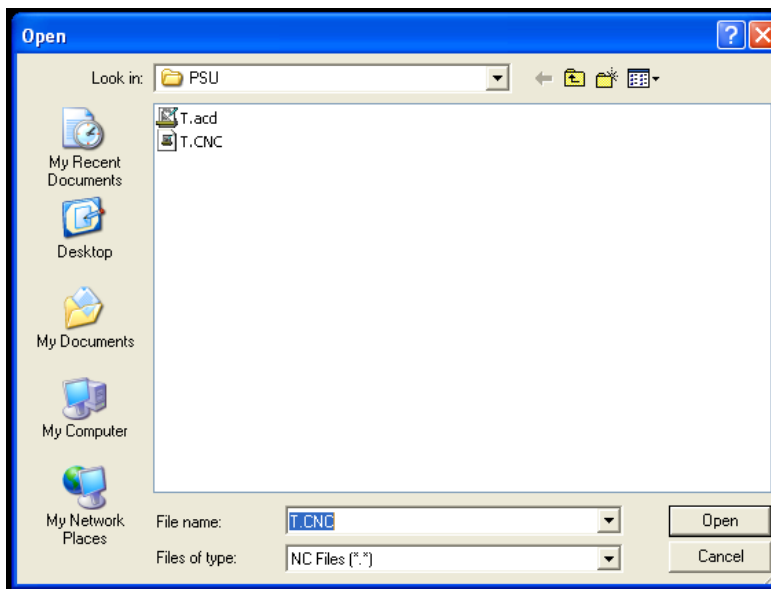


How to use NC-reader

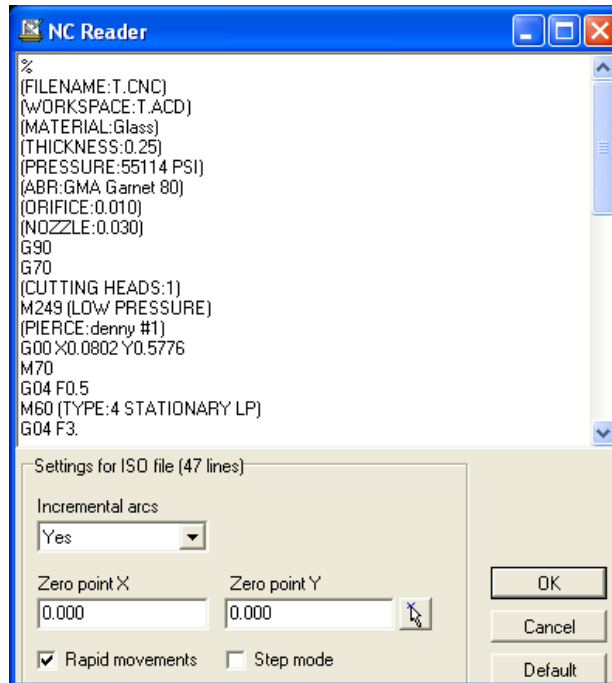


Use NC-Reader for reading a CNC file back as geometry

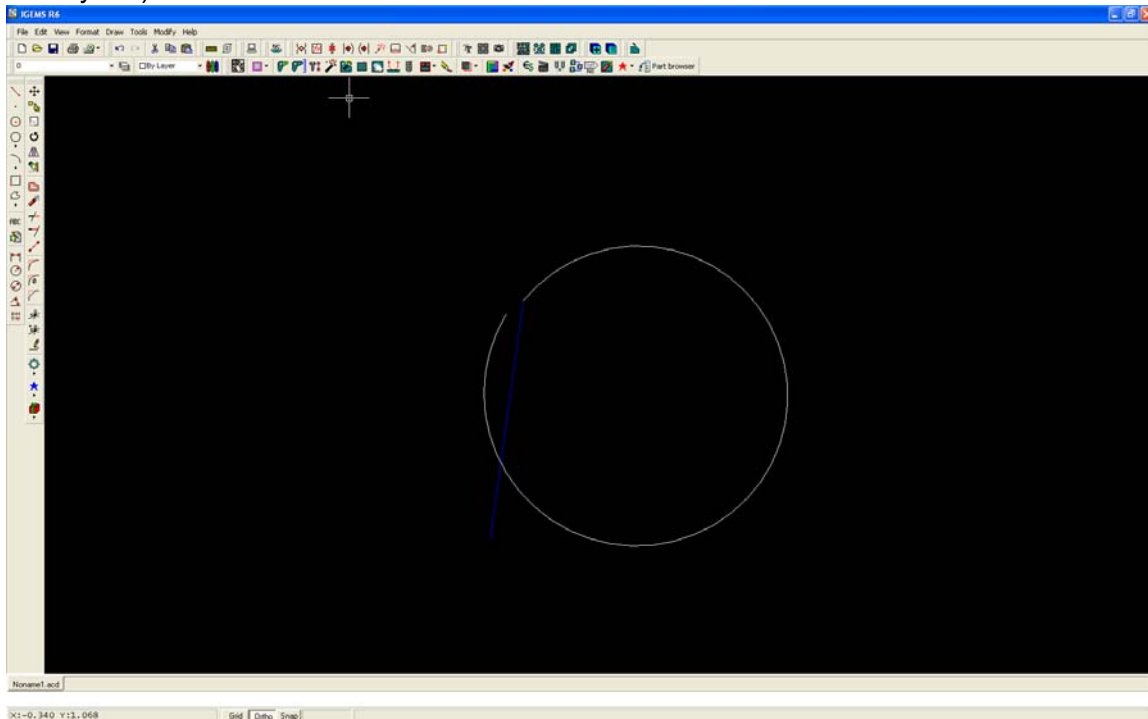


First you select the NC-reader icon, then it will ask you to select the CNC file

After you selected the file it will show you the following window:



Here you can see the text of the CNC file. If you press OK you will see the contour of the centerline of your toolpath. Dark blue lines are rapid lines and the white line is showing your toolpath. In this case you see a tab being created on the part (the circle will be partially cut)



When you are going to use this again as geometry line, be aware that this is made according the centerline of your tool. SO if you used a 0.030" nozzle, it has been offset with 0.015". Likewise for a 0.040" nozzle but then offset of 0.020"